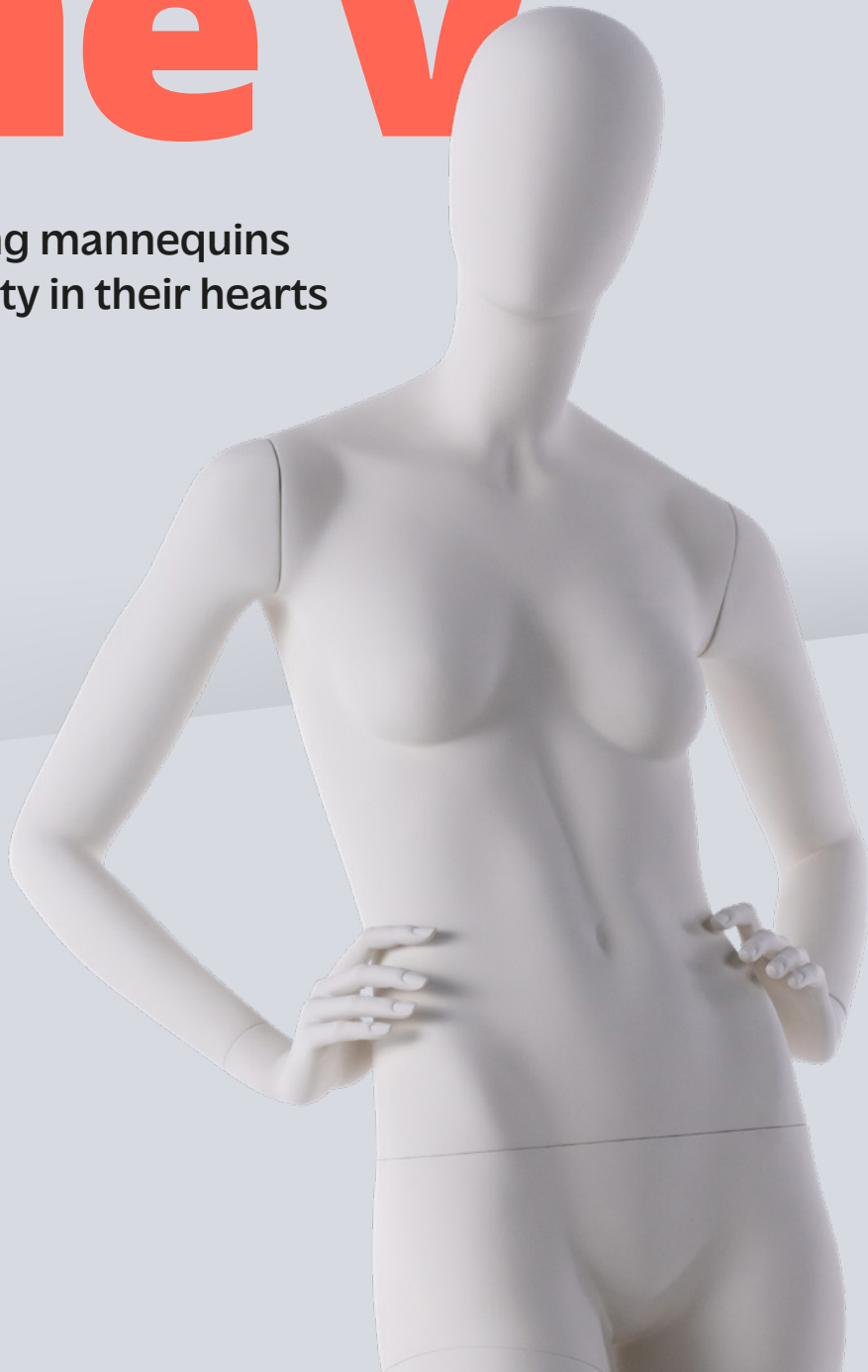


# The V

Creating amazing mannequins  
with sustainability in their hearts



**IDW**



## Measurements

**Height** / 180 cm / 71 Inches

**Bust** / 84 cm / 33 Inches

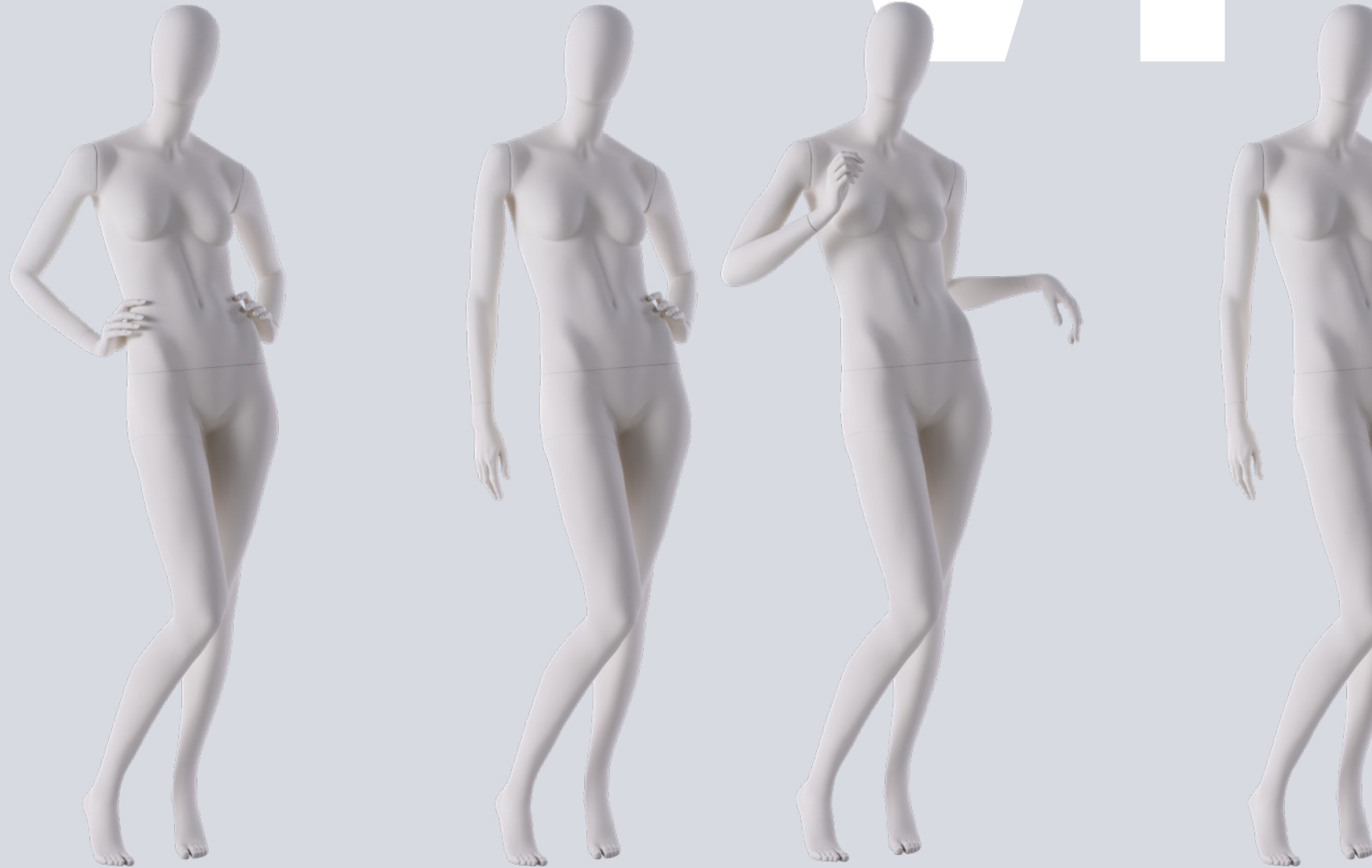
**Waist** / 65 cm / 25.5 Inches

**Hip** / 90 cm / 35.5 Inches

**Heel** / 10 cm / 4 Inches

# V1

2



Measurements are based on average size of the mannequins in the collection and some poses may vary in size.

Shoulders have IDW fittings for easy dressing.

# IDW





V1 R11 L12



V1 R11 L14



V1 R11 L16



V1 R13 L12



V1 R13 L14



V1 R13 L16



V1 R14 L12



V1 R14 L14



V1 R14 L16



V1 R15 L12



V1 R15 L14



V1 R15 L16



V1 R16 L12



V1 R16 L14



V1 R16 L16



Models has open toes.  
**Sculpted feet option**  
available for all versions.

## Measurements

**Height** / 180 cm / 71 Inches

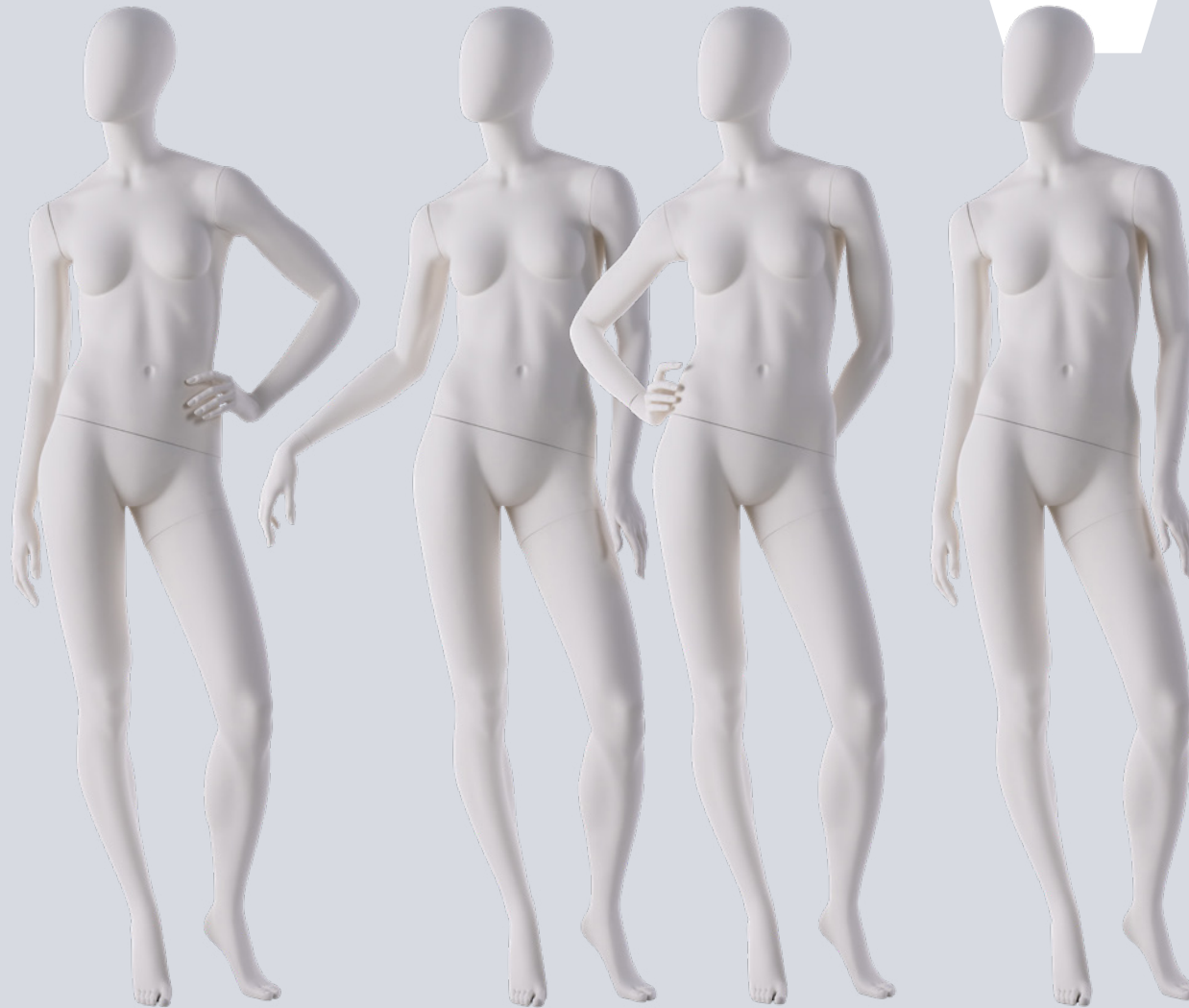
**Bust** / 84 cm / 33 Inches

**Waist** / 65 cm / 25.5 Inches

**Hip** / 90 cm / 35.5 Inches

**Heel** / 10 cm / 4 Inches

# V2<sup>5</sup>



Measurements are based on average size of the mannequins in the collection and some poses may vary in size.

Shoulders have IDW fittings for easy dressing.

# IDW





V2 R21 L22



V2 R21 L24



V2 R21 L26



V2 R21 L28



V2 R23 L22



V2 R23 L24



V2 R23 L26



V2 R23 L28



V2 R25 L22



V2 R25 L24



**Shoulders have IDW fittings**  
for easy dressing.

V2 R25 L26



V2 R25 L28



V2 R27 L22



V2 R27 L24



V2 R27 L26



V2 R27 L28



V2 R29 L22



V2 R29 L24



V2 R29 L26



V2 R29 L28



Models has open toes.  
**Sculpted feet option**  
available for all versions.



## Measurements

**Height** / 180 cm / 71 Inches

**Bust** / 84 cm / 33 Inches

**Waist** / 65 cm / 25.5 Inches

**Hip** / 90 cm / 35.5 Inches

**Heel** / 10 cm / 4 Inches

# V3<sup>9</sup>



Measurements are based on average size of the mannequins in the collection and some poses may vary in size.

Shoulders have IDW fittings for easy dressing.

# IDW





V3 R31 L30



V3 R31 L32



V3 R31 L34



V3 R31 L36



V3 R31 L38



V3 R33 L30



V3 R33 L32



V3 R33 L34



V3 R33 L36



V3 R33 L38



V3 R35 L30



V3 R35 L32



V3 R35 L34



V3 R35 L36



**Shoulders have IDW fittings**  
for easy dressing.

V3 R35 L38



V3 R37 L30



V3 R37 L32



V3 R37 L34



V3 R37 L36



V3 R37 L38



V3 R39 L30



V3 R39 L32



V3 R39 L34



V3 R39 L36



V3 R39 L38



V3 R311 L30



V3 R311 L32



V3 R311 L34



V3 R311 L36



V3 R311 L38



Models has open toes.  
**Sculpted feet option**  
available for all versions.

## Measurements

**Height** / 180 cm / 71 Inches

**Bust** / 84 cm / 33 Inches

**Waist** / 65 cm / 25.5 Inches

**Hip** / 90 cm / 35.5 Inches

**Heel** / 10 cm / 4 Inches

# V4

14



Measurements are based on average size of the mannequins in the collection and some poses may vary in size.

Shoulders have IDW fittings for easy dressing.

# IDW





**Shoulders have IDW fittings**  
for easy dressing.

V4 R41 L40



V4 R41 L42



V4 R41 L44



V4 R41 L46



V4 R41 L48



V4 R41 L422



V4 R43 L40



V4 R43 L44



V4 R43 L46



V4 R43 L48



V4 R43 L422



V4 R45 L40



V4 R45 L42



V4 R45 L44





V4 R45 L46



V4 R45 L48



V4 R45 L422



V4 R47 L40



V4 R47 L42



V4 R47 L44



V4 R47 L46



V4 R47 L48



V4 R47 L422



V4 R49 L40



V4 R49 L42



V4 R49 L44



V4 R49 L46



V4 R49 L48



V4 R49 L422



Models has open toes.  
**Sculpted feet option**  
available for all versions.

## Measurements

**Height** / 180 cm / 71 Inches

**Bust** / 84 cm / 33 Inches

**Waist** / 65 cm / 25.5 Inches

**Hip** / 90 cm / 35.5 Inches

**Heel** / 10 cm / 4 Inches

# V5

19



Measurements are based on average size of the mannequins in the collection and some poses may vary in size.

Shoulders have IDW fittings for easy dressing.

# IDW





**Shoulders have IDW fittings**  
for easy dressing.

V5 R51 L50



V5 R51 L52



V5 R51 L54



V5 R53 L50



V5 R53 L52



V5 R53 L54



V5 R55 L50



V5 R55 L52



V5 R55 L54



Models has open toes.  
**Sculpted feet option**  
available for all versions.

## Measurements

**Height** / 180 cm / 71 Inches

**Bust** / 84 cm / 33 Inches

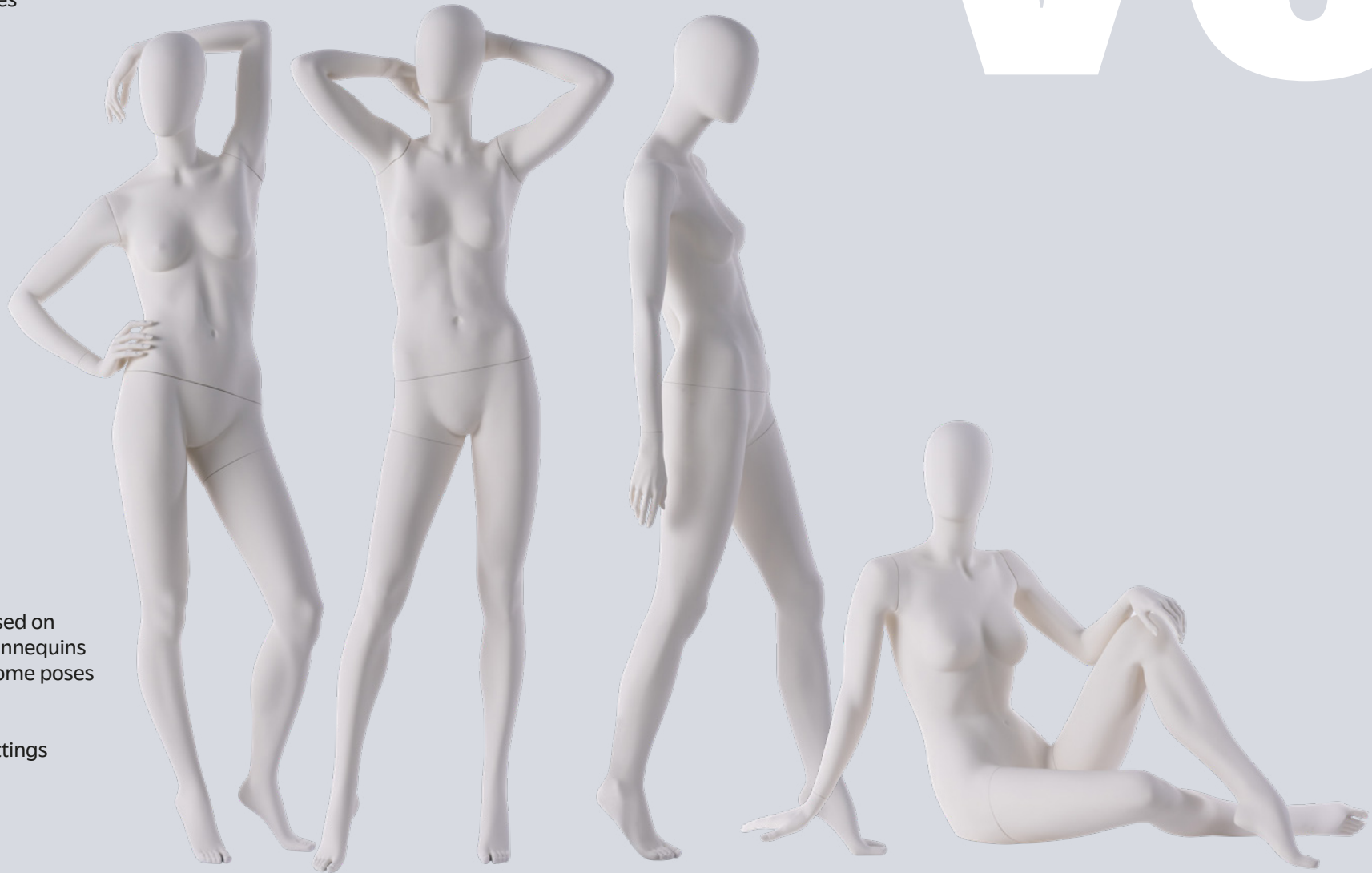
**Waist** / 65 cm / 25.5 Inches

**Hip** / 90 cm / 35.5 Inches

**Heel** / 10 cm / 4 Inches

# V6

22



Measurements are based on average size of the mannequins in the collection and some poses may vary in size.

Shoulders have IDW fittings for easy dressing.

# IDW



Shoulders have IDW fittings for easy dressing.



V6 100



V6 200



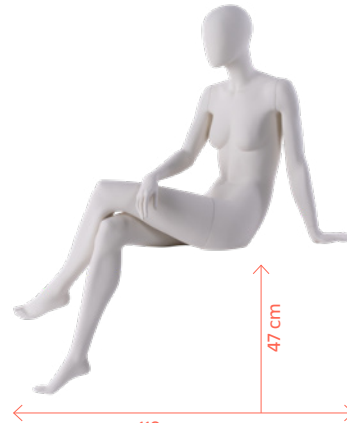
V6 300



V6 500



V6 400



V6 600



V6 R61 L62



V6 R61 L64



V6 R61 L66



V6 R63 L62



V6 R63 L64



V6 R63 L66



V6 R65 L62



V6 R65 L64



V6 R65 L66



Models has open toes.  
**Sculpted feet option**  
**available for all versions.**



# IDW

Creating amazing mannequins  
with sustainability in their hearts



[info@idwdisplay.com](mailto:info@idwdisplay.com)  
[www.idwdisplay.com](http://www.idwdisplay.com)

